

Section IV

15 marks

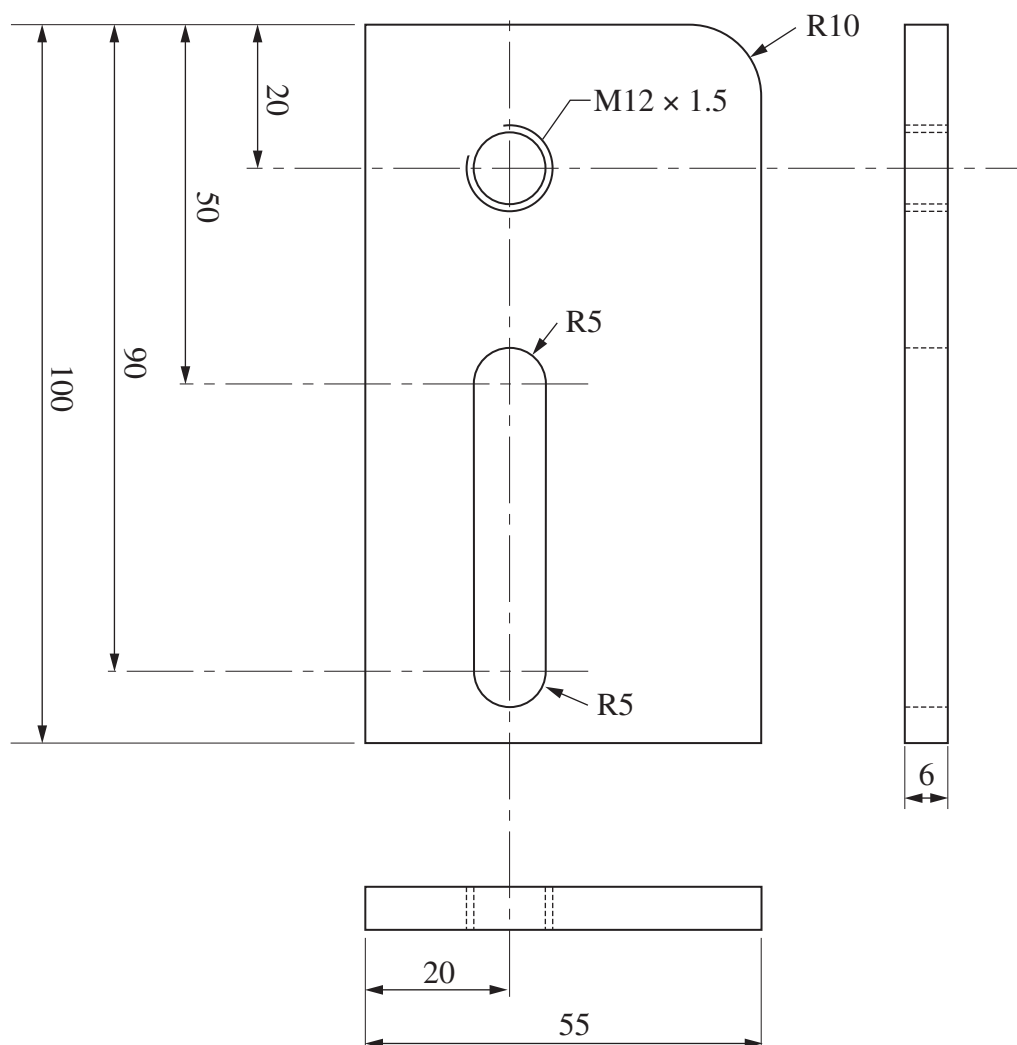
Attempt Question 22

Allow about 25 minutes for this section

Answer the question in a SEPARATE writing booklet. Extra writing booklets are available.

Question 22 (15 marks)

The bracket shown is to be manufactured in the workshop from mild steel stock sized $300 \times 55 \times 6$ mm.



- (a) Produce a risk assessment for the process of manufacturing this bracket. 5
- (b) Produce a job diary entry identifying the tools, processes and equipment required to complete this task. 10

End of paper

- 18 -