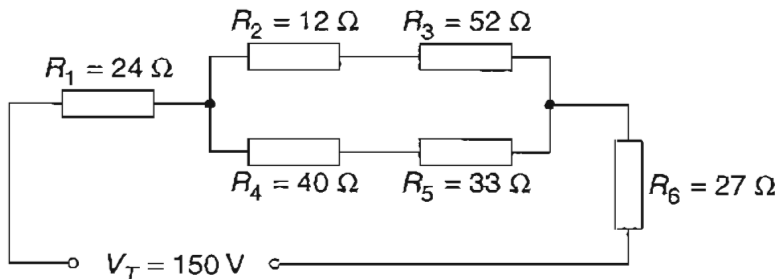


Question 24 (3 marks)

Calculate the total resistance of the electrical circuit shown. Show all your working in the space provided.

3



$$12 + 52 = 64, \quad 40 + 33 = 73, \quad 64 \times 73 = 4672$$
$$4672 + 24 = 4696$$
$$4696 + 27 = 4723$$
$$R_T = 4.723\text{K}\Omega$$