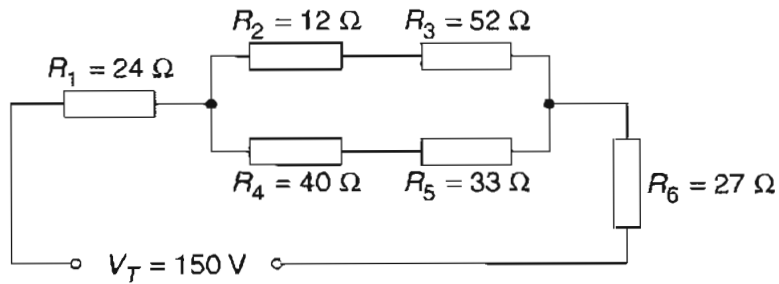


Question 24 (3 marks)

Calculate the total resistance of the electrical circuit shown. Show all your working in the space provided.

3



$$R = R_2 + R_3$$
$$= 12 + 52$$
$$= 64$$

$$R_T = R_1 + R_p + R_6$$
$$= 24 + 0.029 + 27$$
$$= 51.029\ \Omega$$

$$R = R_4 + R_5$$
$$= 40 + 33$$
$$= 73$$

$$R_p = \frac{1}{64} + \frac{1}{73}$$
$$= 0.029\ \Omega$$