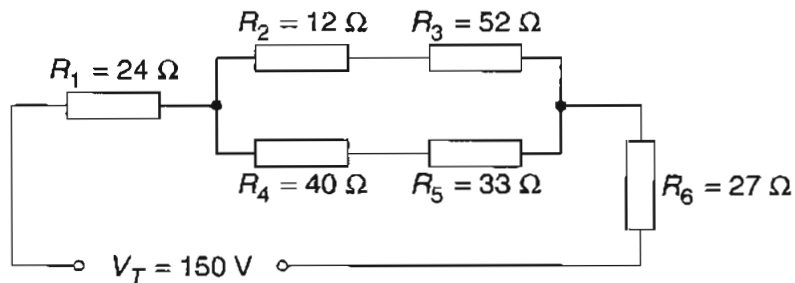


**Question 24** (3 marks)

Calculate the total resistance of the electrical circuit shown. Show all your working in the space provided.

**3**



$$R_{2,3,4,5} = \frac{1}{12} + \frac{1}{52} + \frac{1}{40} + \frac{1}{33} = 6.33\ \Omega$$

$$27 + 24 = 51 + 6.33 = 57.33\ \Omega$$