

Question 23 (3 marks)

Describe the process you should use to measure a resistor with a nominal value of $1\text{K}\Omega$, using an analogue ohmmeter.

3

.....

.....

.....

.....

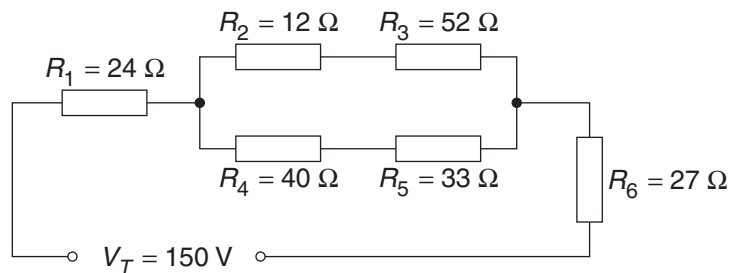
.....

.....

Question 24 (3 marks)

Calculate the total resistance of the electrical circuit shown. Show all your working in the space provided.

3



.....

.....

.....

.....

.....

.....