

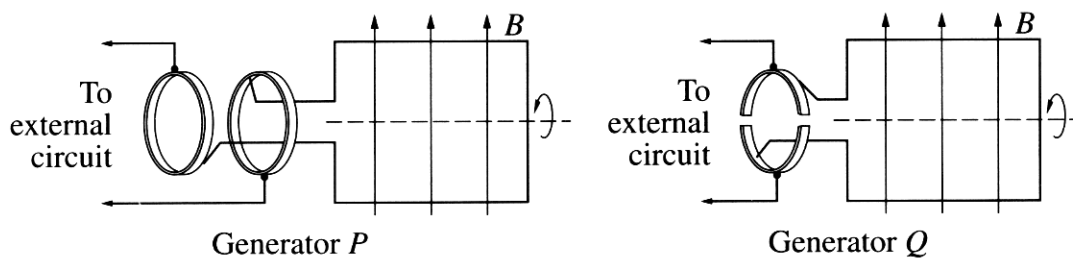
Physics

Section I – Part B (continued)

Marks

Question 22 (6 marks)

Two types of generator are shown in the diagram.



(a) What is the function of the brush in a generator?

1

*The function of brush is to transmit electricity or conduct electricity.*

(b) Which of these generators is a DC generator? Justify your choice.

3

*They are both the same DC because they function the same, one of them has split-rings and the other doesn't but they do the same job.*

(c) Outline why AC generators are used in large-scale electrical power production.

2

*Because it doesn't go on and off. In this case they are dealing with high production of power so it can't be DC.*