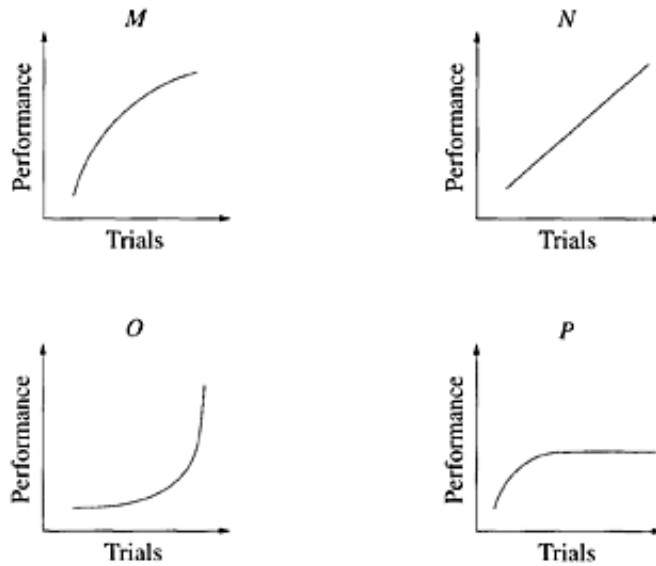


- 20 The graphs show performance in trials in the same simple movement tasks by four athletes, *M*, *N*, *O* and *P*, each of whom has a different level of state anxiety.



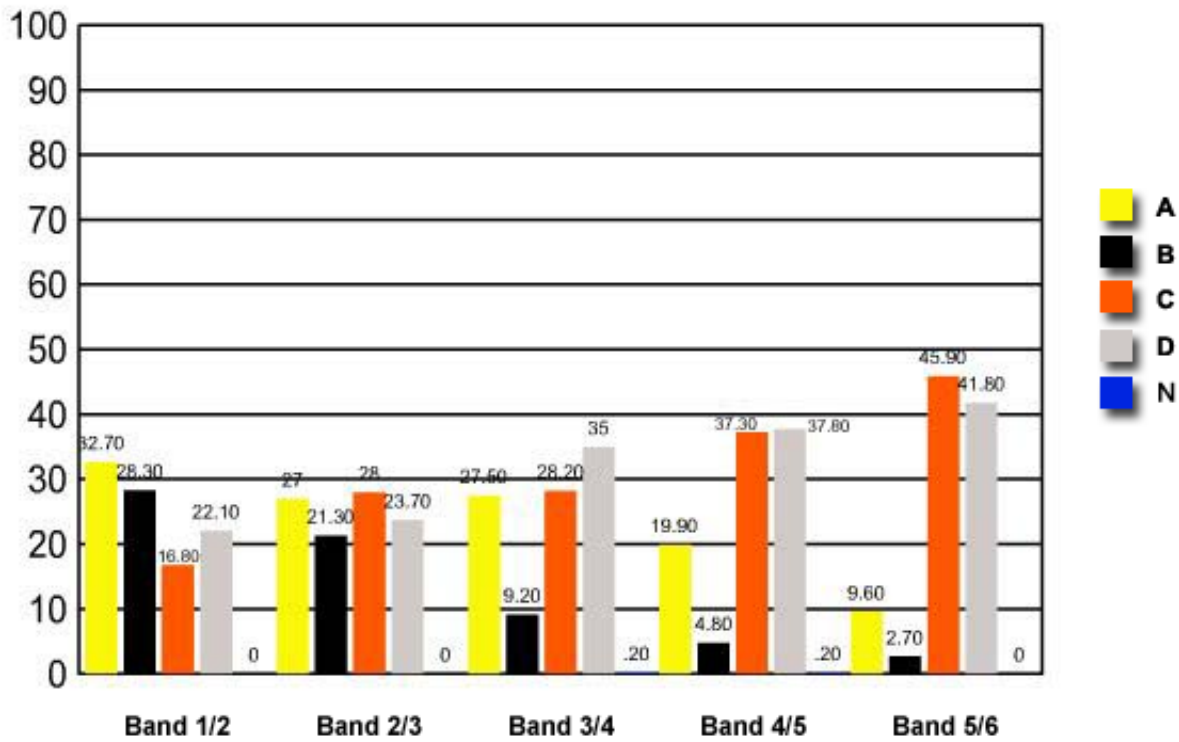
Which graph represents the highly anxious athlete?

- (A) *M*
- (B) *N*
- ✓ (C) *O*
- (D) *P*

**Band 1/2   Band 2/3   Band 3/4   Band 4/5   Band 5/6**

<b>A</b>	32.70	27	27.50	19.90	9.60
<b>B</b>	28.30	21.30	9.20	4.80	2.70
<b>C</b>	<b>16.80</b>	<b>28</b>	<b>28.20</b>	<b>37.30</b>	<b>45.90</b>
<b>D</b>	22.10	23.70	35	37.80	41.80
<b>N</b>	0	0	0.20	0.20	0

## Question 20 : % answers correct by band range



The table and graph show, for the groups of students whose marks in the examination corresponded to the borderline between two bands, what percentages of each group selected the responses A, B, C and D. N is used to identify: No valid response.

---