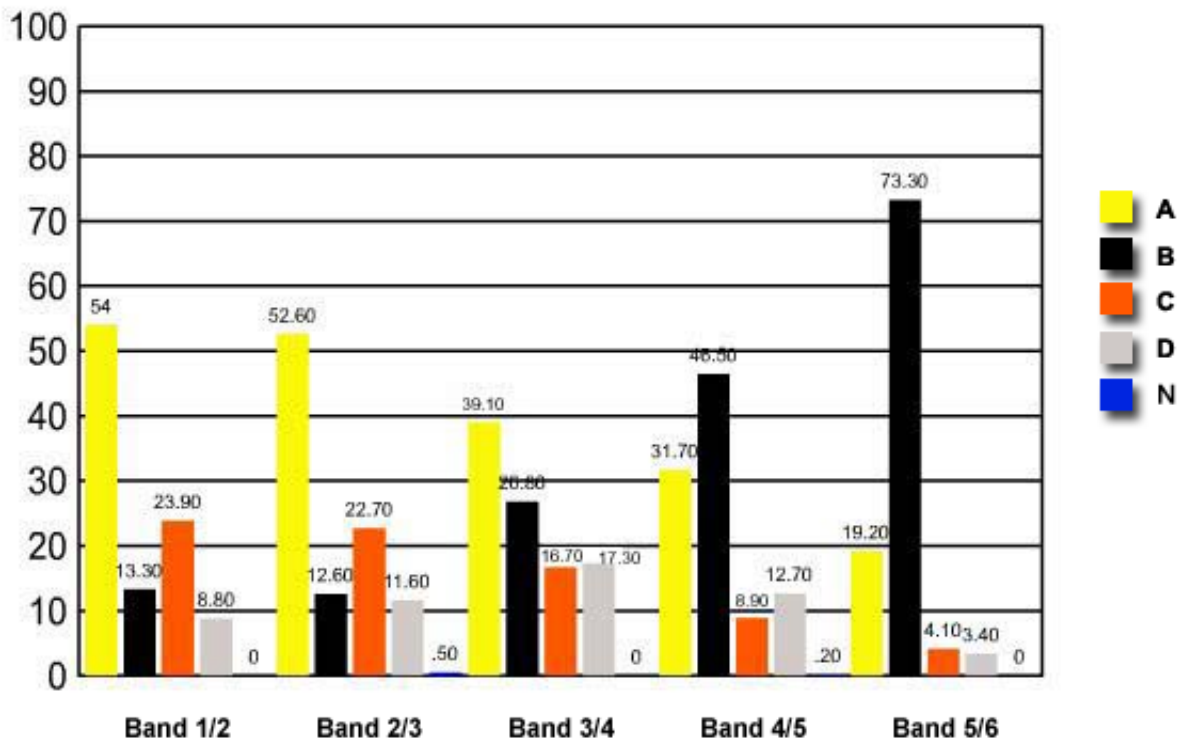


- 1 In Australia, which of the following major causes of illness and death are showing an upward trend in incidence?
- (A) Cancer and cardiovascular disease
 - ✓ (B) Cancer and respiratory disease
 - (C) Injuries and cardiovascular disease
 - (D) Injuries and respiratory disease

	<i>Band 1/2</i>	<i>Band 2/3</i>	<i>Band 3/4</i>	<i>Band 4/5</i>	<i>Band 5/6</i>
A	54	52.60	39.10	31.70	19.20
B	13.30	12.60	26.80	46.50	73.30
C	23.90	22.70	16.70	8.90	4.10
D	8.80	11.60	17.30	12.70	3.40
N	0	0.50	0	0.20	0

Question 1 : % answers correct by band range



The table and graph show, for the groups of students whose marks in the examination corresponded to the borderline between two bands, what percentages of each group selected the responses A, B, C and D. N is used to identify: No valid response.