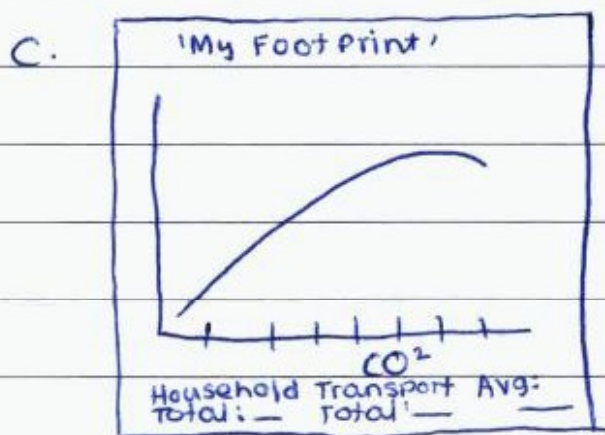


Start here for  
Question Number: **23**

23 a. drop down menus, check boxes and icons have been used to avoid data being entered twice. The data is specific.

b. to make the website more interactive, visually and hence engaging.



d. the calculator should organise the data in a way that can be put into information. Data should be processed by looking at the CO<sub>2</sub> emissions and mathematically determining the footprint average, transport total, house hold totals. The calculator needs to make sense of the data it has just collected.