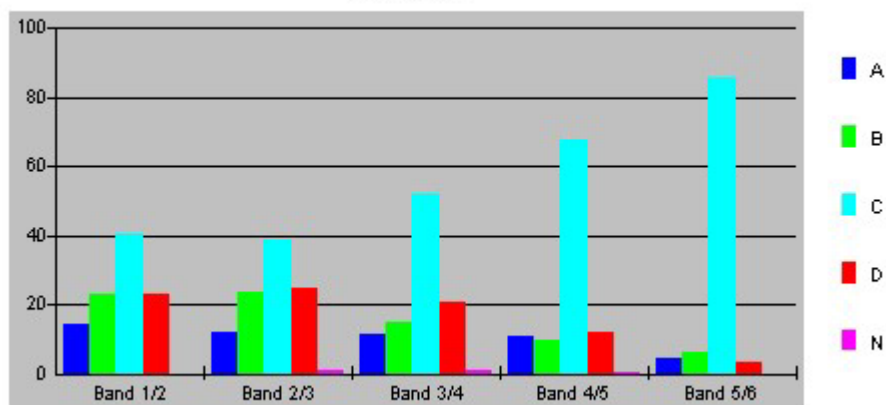


## Question 6

Choice	Band 1/2	Band 2/3	Band 3/4	Band 4/5	Band 5/6
A	14	12	11.5	10.7	4.4
B	22.8	23.6	14.7	9.8	6.2
C	40.4	38.7	51.8	67.4	85.8
D	22.8	24.9	20.9	11.8	3.5
N	0	0.9	1	0.3	0

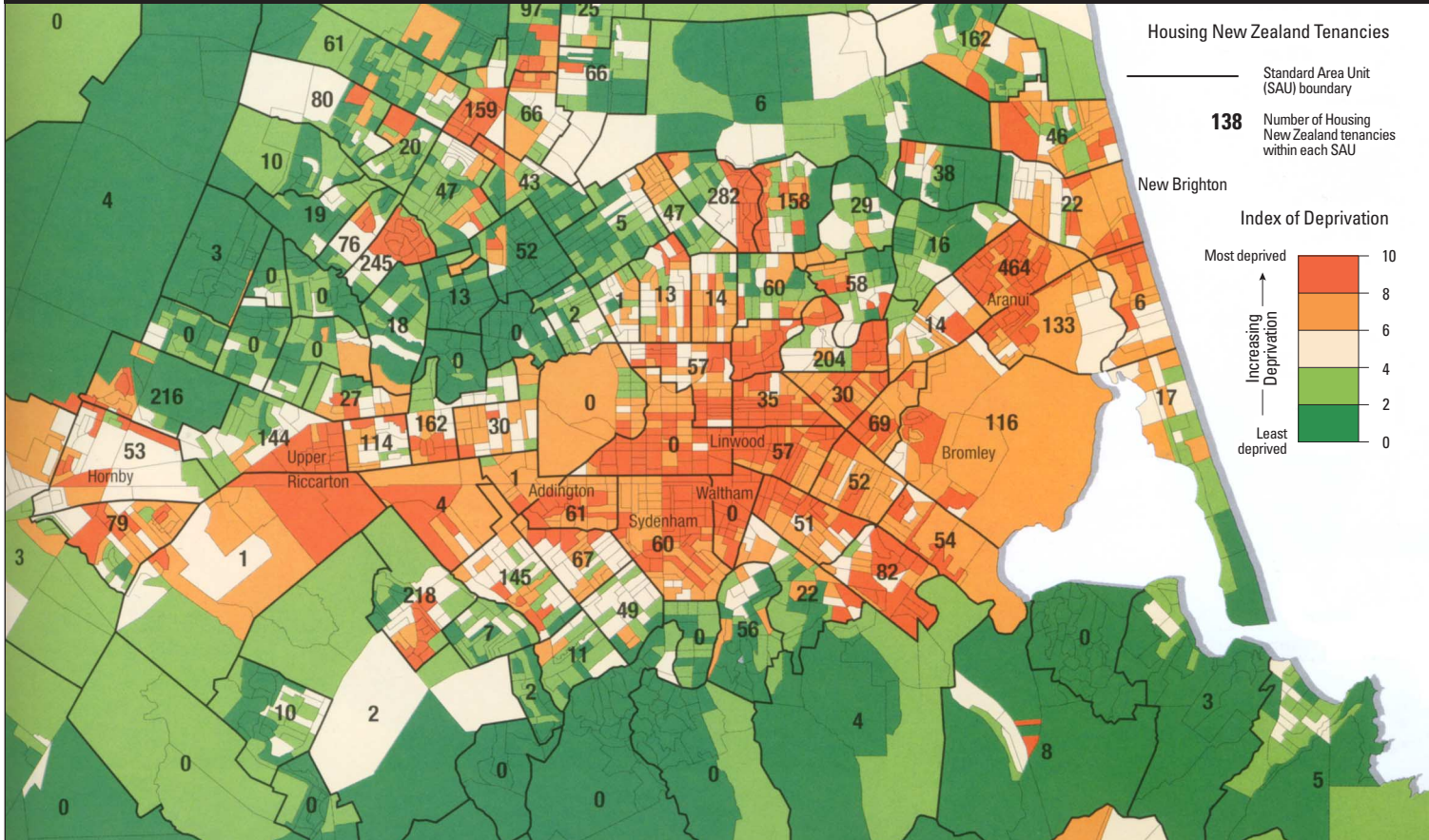
Question 6



The table and graph show, for the groups of students whose marks in the examination corresponded to the borderline between two bands, what percentages of each group selected the responses A, B, C and D. N is used to identify: No valid response.



Source C — Index of Deprivation, Christchurch City by Meshblock 1996 Census



Page 2

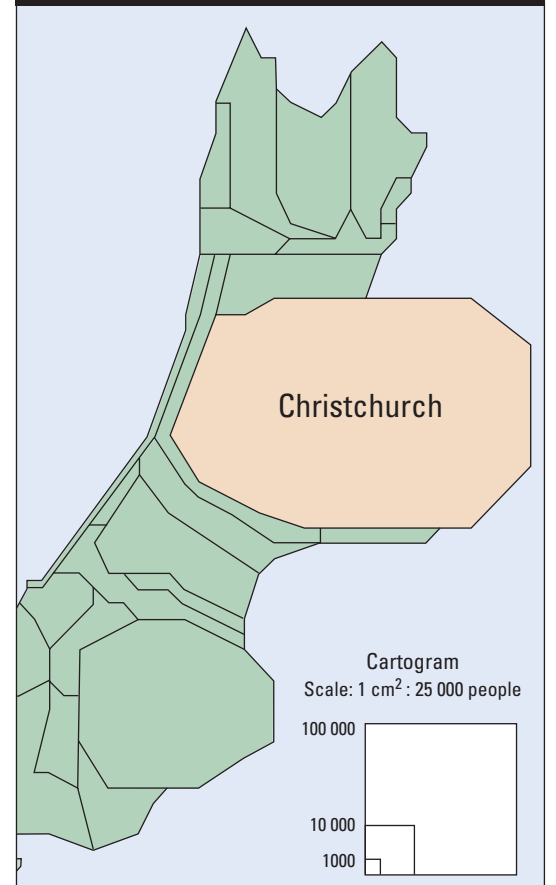
Source D — Deprivation

The Christchurch Urban Area demonstrates a clear geographical spread based on the Index of Deprivation (IOD).

Deprivation is the state of being worse off than the society in which one lives. The IOD is based on:

- access to telephone
- income from government benefits
- unemployment
- income level
- access to a motor vehicle
- single parent families
- low qualifications
- level of house ownership
- living space

Source E — Cartogram

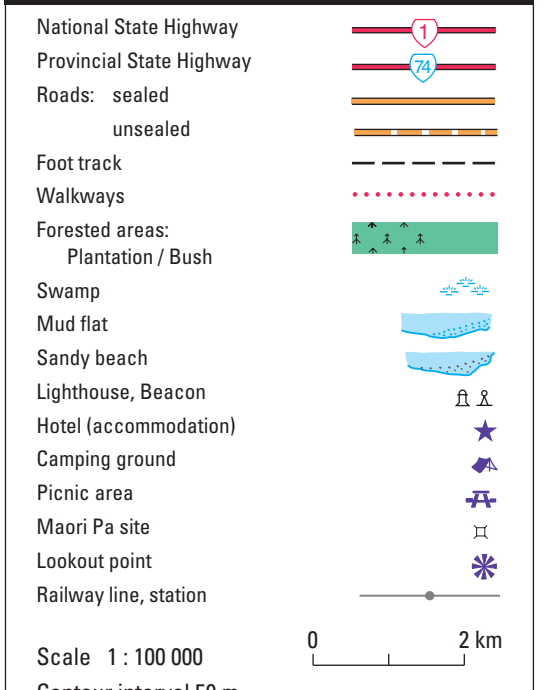


Source F — Topographic Map – Christchurch

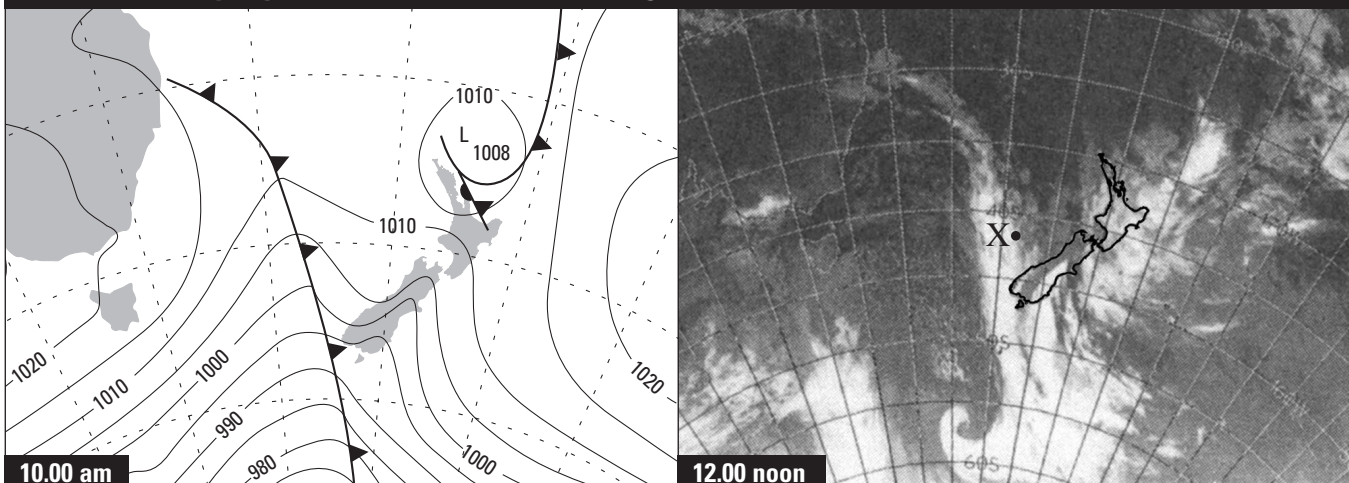


Page 3

KEY for Source F



Source G — Synoptic Chart and Satellite Image for 2 December 2000



Source H — Lyttelton Harbour

