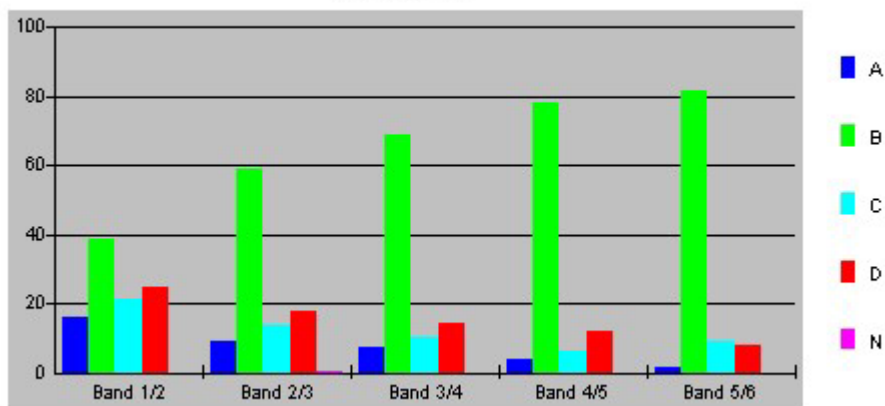


Question 13

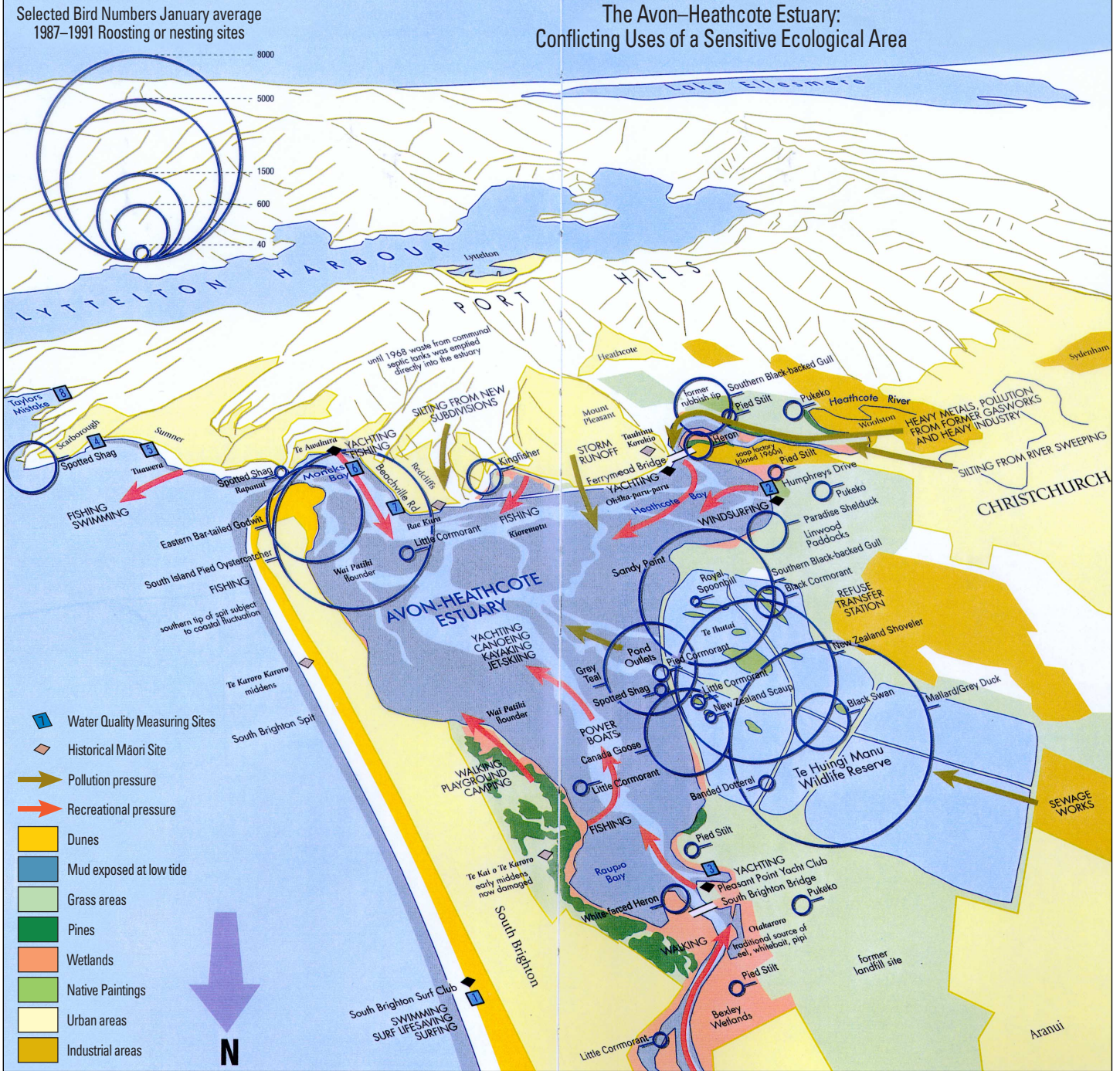
Choice	Band 1/2	Band 2/3	Band 3/4	Band 4/5	Band 5/6
A	15.8	8.9	7.1	3.7	1.8
B	38.6	59.1	68.6	77.8	81.4
C	21.1	13.8	10.3	6.3	8.8
D	24.6	17.8	14	12.1	8
N	0	0.4	0	0	0

Question 13

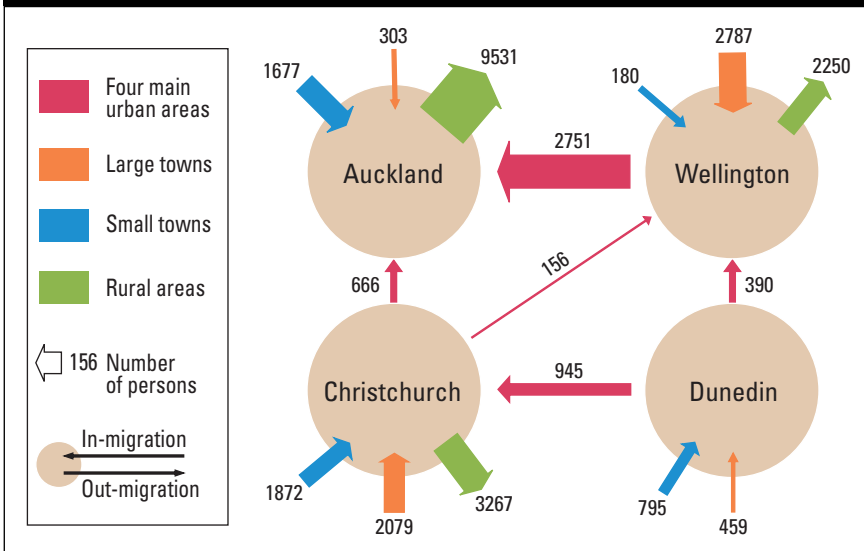


The table and graph show, for the groups of students whose marks in the examination corresponded to the borderline between two bands, what percentages of each group selected the responses A, B, C and D. N is used to identify: No valid response.

Source I — Resource Management of the Avon-Heathcote Estuary, 2000



Source J — Net Internal Migration: Four Main Urban Areas 1991–96



Source K — Sediment Core

