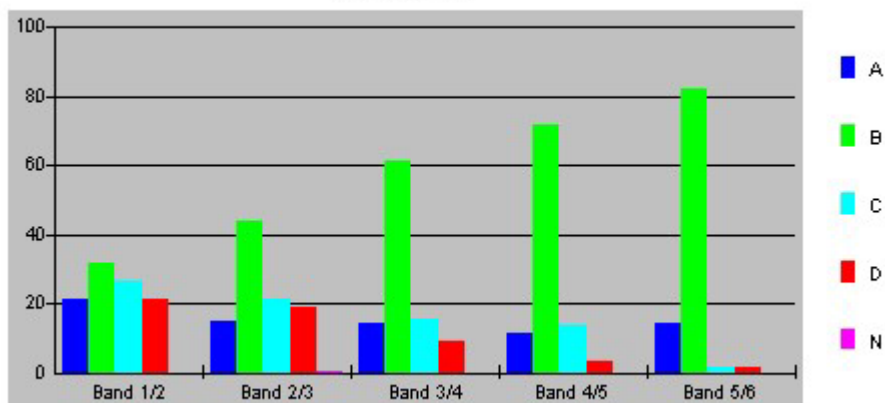


## Question 12

Choice	Band 1/2	Band 2/3	Band 3/4	Band 4/5	Band 5/6
A	21.1	15.1	14	11.5	14.2
B	31.6	44	61.4	71.8	82.3
C	26.3	21.3	15.7	13.5	1.8
D	21.1	19.1	8.8	3.2	1.8
N	0	0.4	0	0	0

Question 12

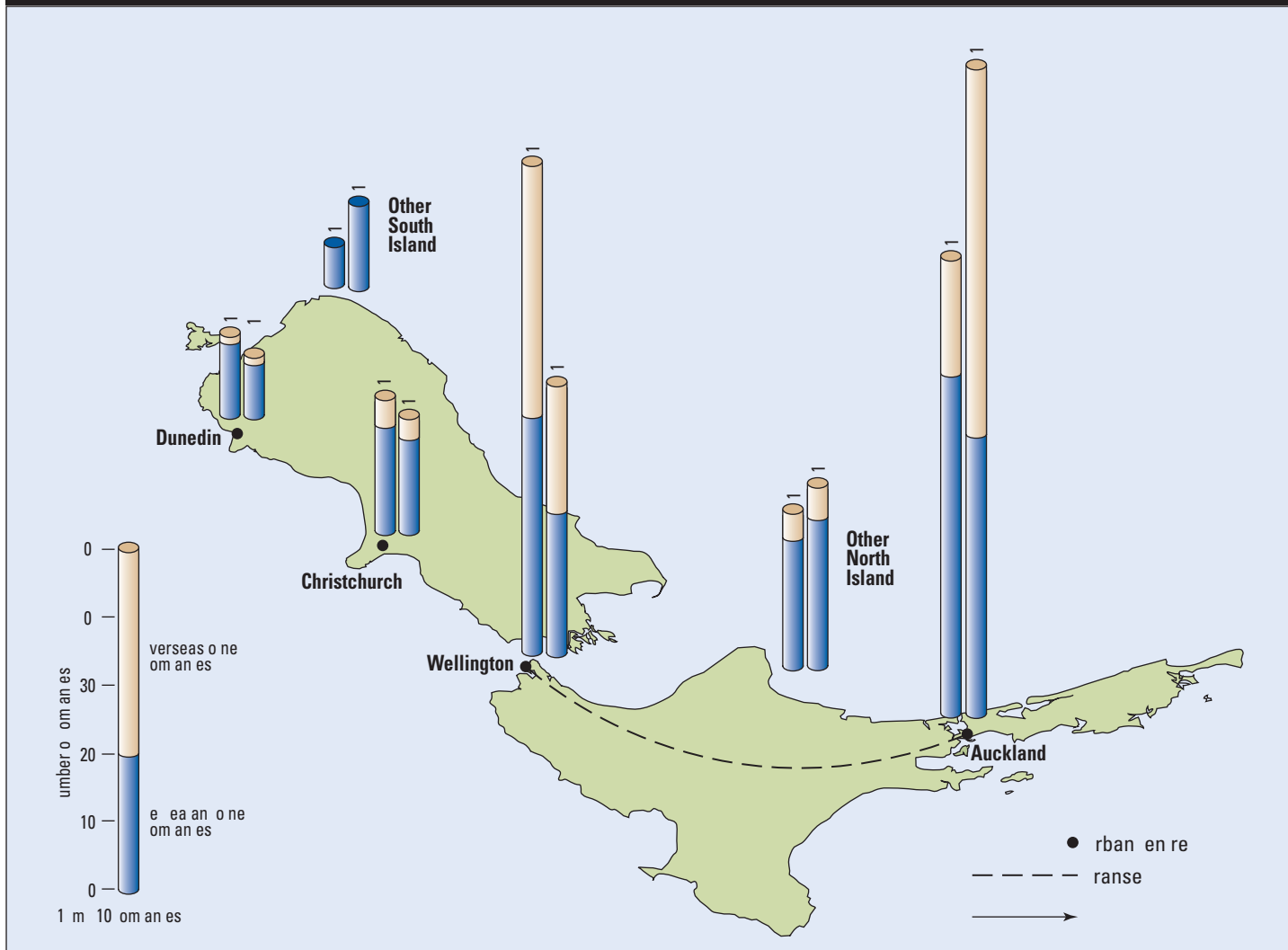


The table and graph show, for the groups of students whose marks in the examination corresponded to the borderline between two bands, what percentages of each group selected the responses A, B, C and D. N is used to identify: No valid response.

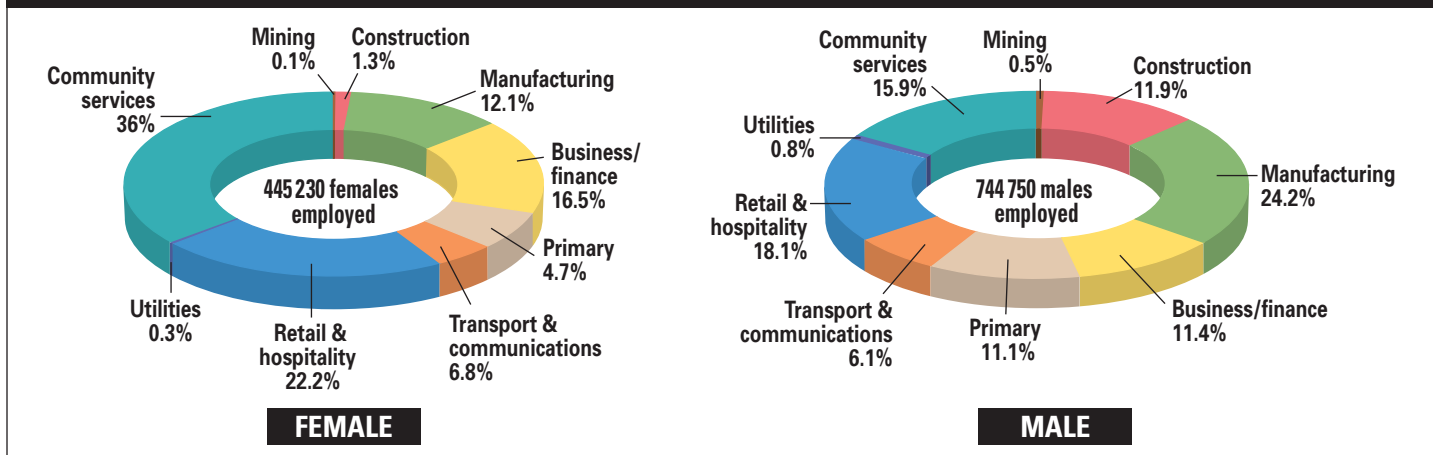
# Geography Stimulus Booklet

## NEW ZEALAND

Source A — The Top 200 Companies, 1987 and 1997



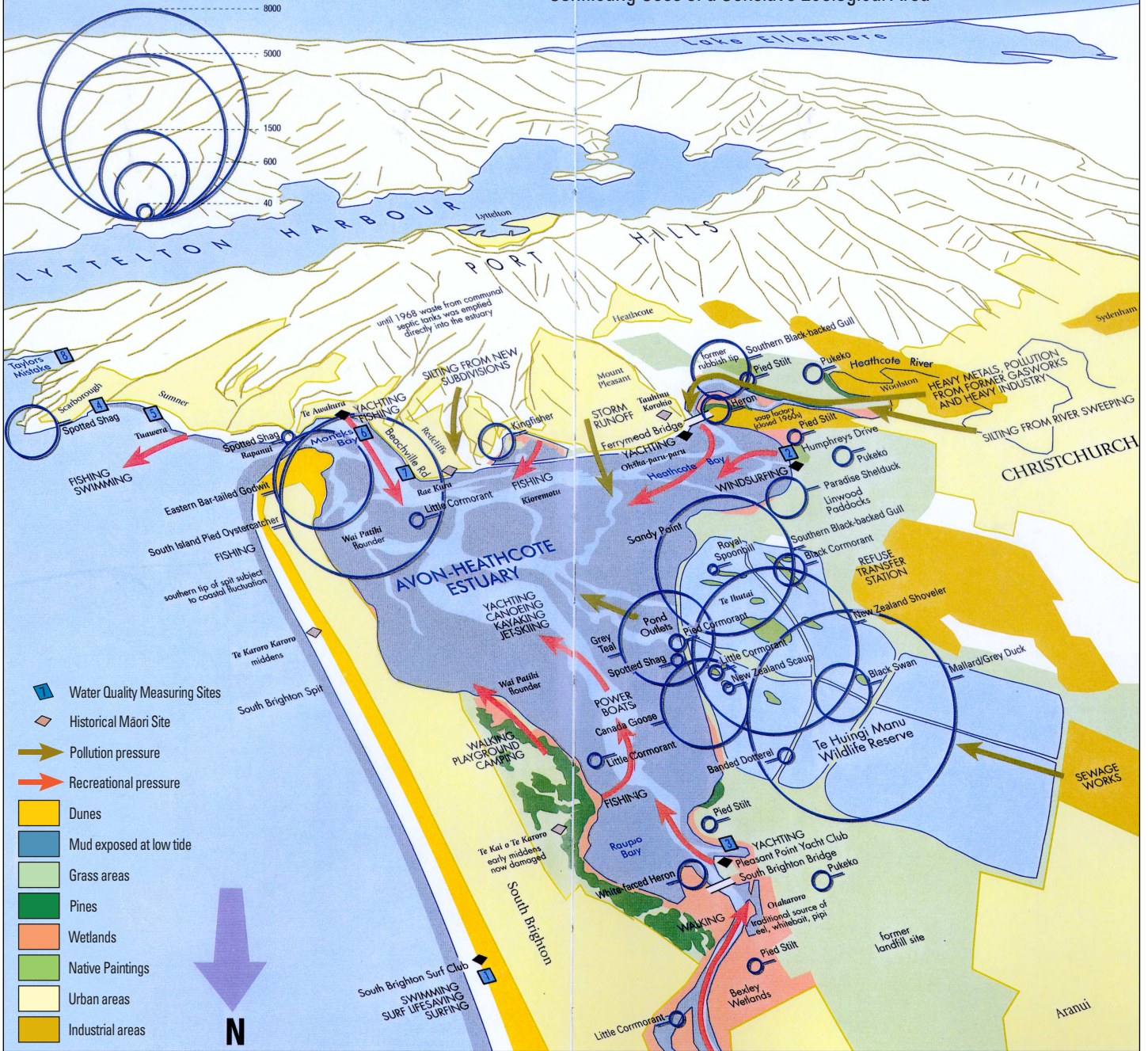
Source B — Full-time Employment by Industry, 1996



# Source I — Resource Management of the Avon-Heathcote Estuary, 2000

Selected Bird Numbers January average  
1987–1991 Roosting or nesting sites

The Avon-Heathcote Estuary:  
Conflicting Uses of a Sensitive Ecological Area



# Source J — Net Internal Migration: Four Main Urban Areas 1991–96

# Source K — Sediment Core

