

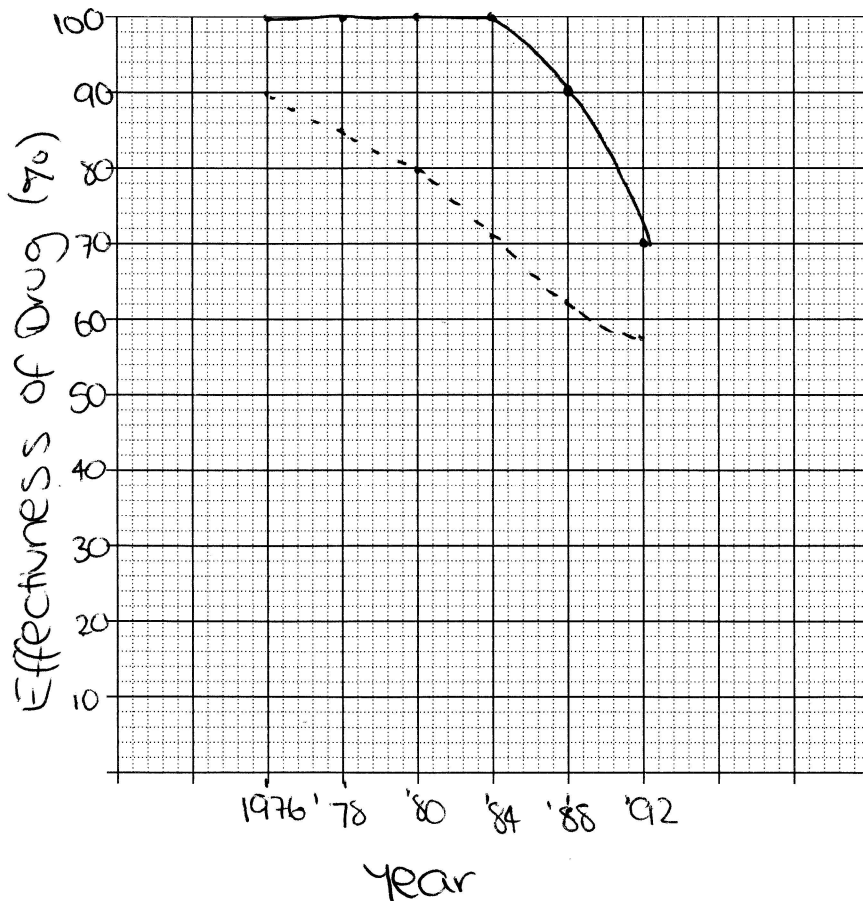
Question 22 (6 marks)

The following data were recorded about the effectiveness of antimalarial drugs for treating malaria.

Year	Effectiveness of drug (%)	
	Mefloquine	Quinine
1976	100	90
1978	100	85
1980	100	80
1984	100	72
1988	90	64
1992	70	58

(a) Graph the data on the grid.

3



■ Mefloquine
 ---- Quinine

Question 22 continues on page 11

Question 22 (continued)

- (b) Use these data to explain the impact of human processes on biodiversity.

3

Both these medications for malaria become less effective over time. This is because mosquitoes and humans become or develop an immunity to the drug.

End of Question 22