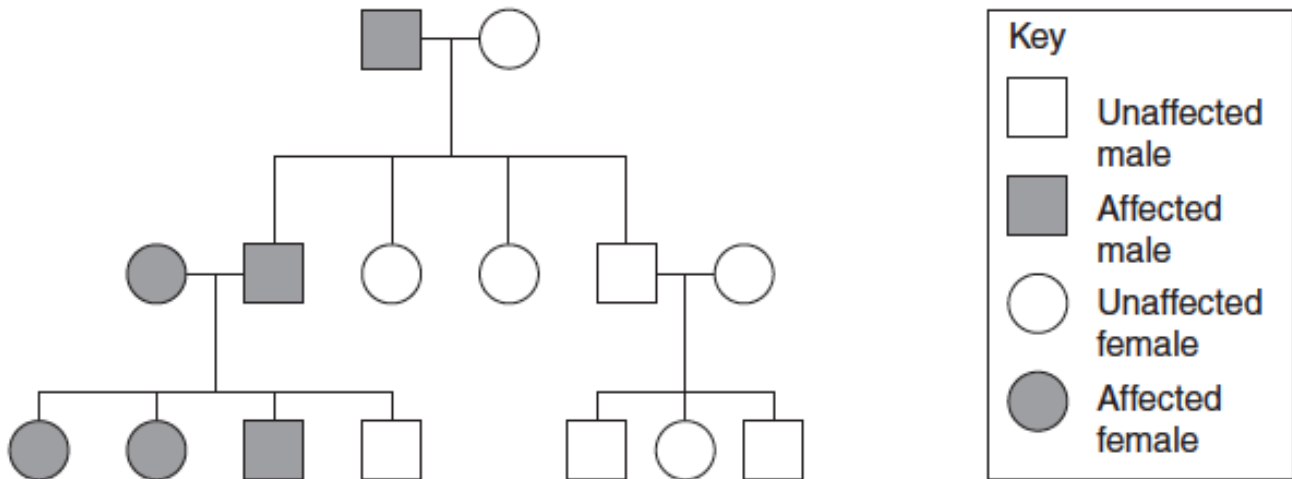


2010 Biology

Question 14

A pedigree is shown.

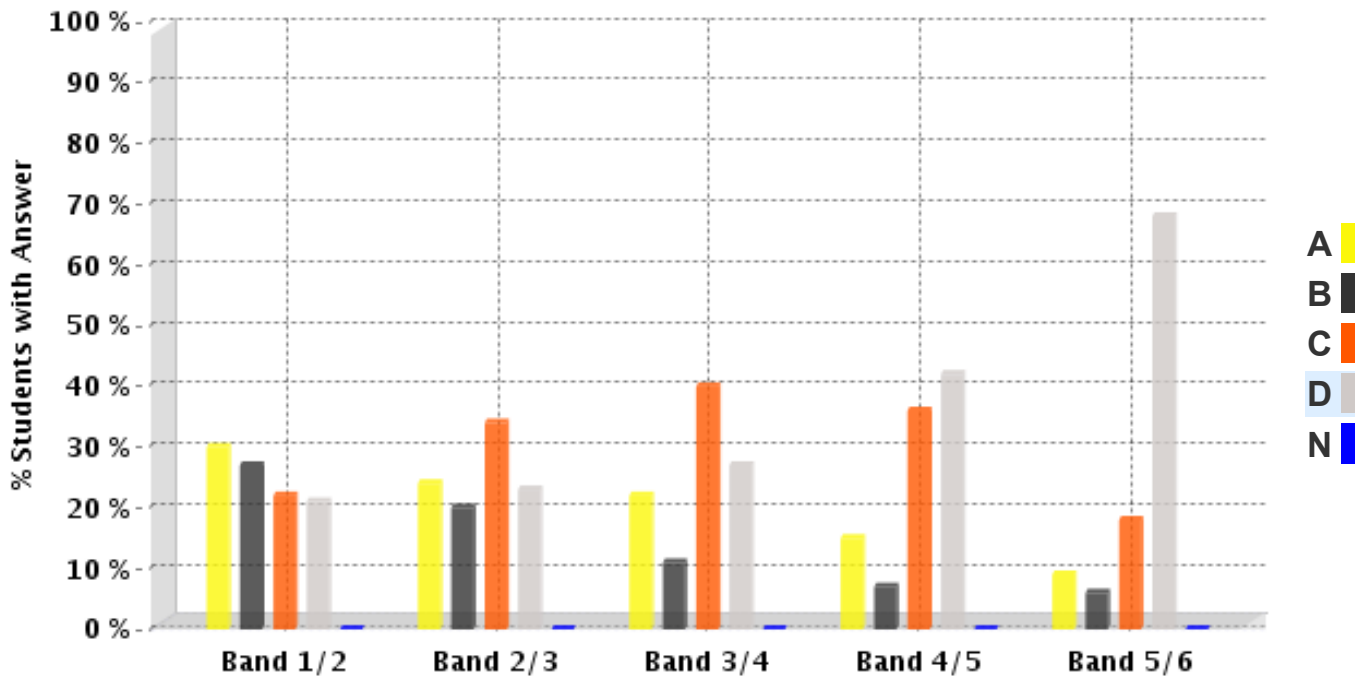


What type of inheritance is shown in the pedigree?

- A Sex-linked recessive
- B Sex-linked dominant
- C Non sex-linked recessive
- D Non sex-linked dominant

2010 Biology

HSC Statistics on this Question:



	Band 1/2	Band 2/3	Band 3/4	Band 4/5	Band 5/6
A	30%	24%	22%	15%	9%
B	27%	20%	11%	7%	6%
C	22%	34%	40%	36%	18%
D	21%	23%	27%	42%	68%
N	0%	0%	0%	0%	0%

The table and graph show, for the groups of students whose marks in the examination corresponded to the borderline between two bands, what percentages of each group selected the responses A, B, C and D. N is used to identify: No valid response.