

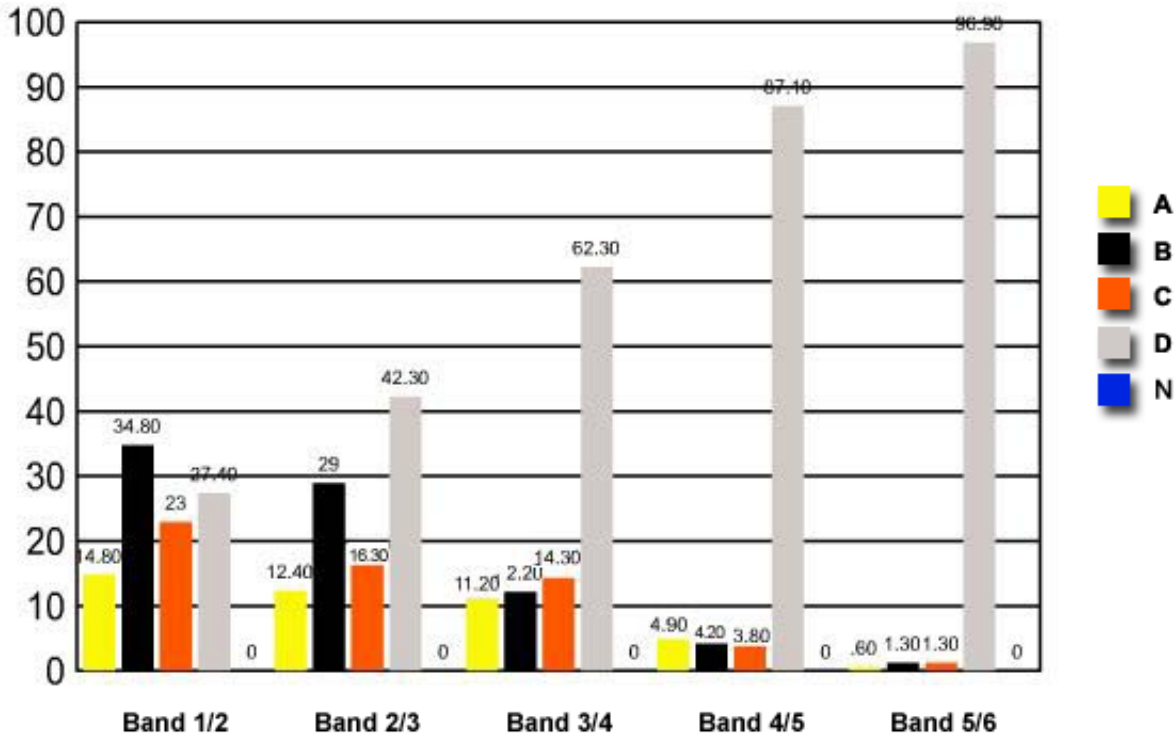
7 A biologist studied the concentration of urine produced by a terrestrial mammal, a freshwater fish and a marine fish.

Which row of observations would be the most likely for these organisms in their natural environment?

	<i>Terrestrial mammal</i>	<i>Freshwater fish</i>	<i>Marine fish</i>
(A)	Produces dilute urine	Produces concentrated urine	Produces dilute urine
(B)	Produces concentrated urine	Produces dilute urine	Produces dilute urine
(C)	Produces dilute urine	Produces concentrated urine	Produces concentrated urine
✓ (D)	Produces concentrated urine	Produces dilute urine	Produces concentrated urine

	Band 1/2	Band 2/3	Band 3/4	Band 4/5	Band 5/6
A	14.80	12.40	11.20	4.90	0.60
B	34.80	29	12.20	4.20	1.30
C	23	16.30	14.30	3.80	1.30
D	27.40	42.30	62.30	87.10	96.90
N	0	0	0	0	0

Question 7 : % answers correct by band range



The table and graph show, for the groups of students whose marks in the examination corresponded to the borderline between two bands, what percentages of each group selected the responses A, B, C and D. N is used to identify: No valid response.