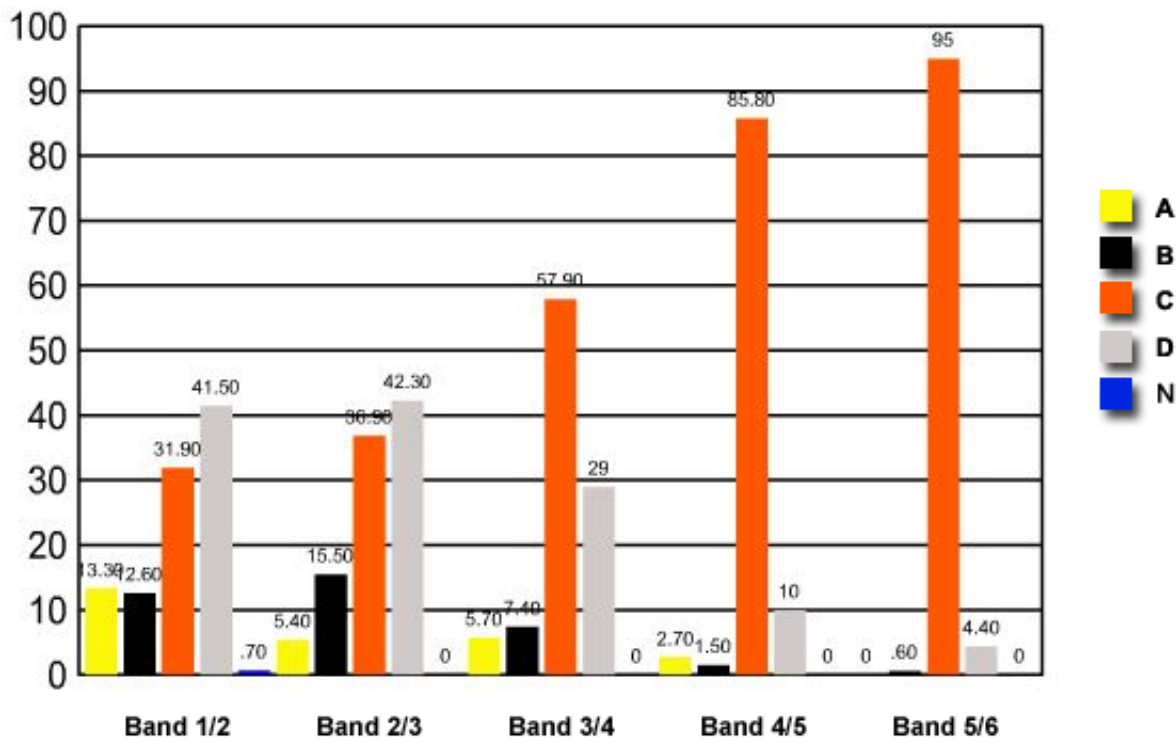


- 2 In an endotherm, which of the following homeostatic responses would be produced by a sudden and prolonged decrease in ambient temperature?
- (A) Decreased uptake of oxygen
 - (B) Decreased muscular activity
 - ✓ (C) Decreased blood flow to the skin surface
 - (D) Decreased rate of internal metabolic processes

	<i>Band 1/2</i>	<i>Band 2/3</i>	<i>Band 3/4</i>	<i>Band 4/5</i>	<i>Band 5/6</i>
<i>A</i>	13.30	5.40	5.70	2.70	0
<i>B</i>	12.60	15.50	7.40	1.50	0.60
<i>C</i>	31.90	36.90	57.90	85.80	95
<i>D</i>	41.50	42.30	29	10	4.40
<i>N</i>	0.70	0	0	0	0

Question 2 : % answers correct by band range



The table and graph show, for the groups of students whose marks in the examination corresponded to the borderline between two bands, what percentages of each group selected the responses A, B, C and D. N is used to identify: No valid response.