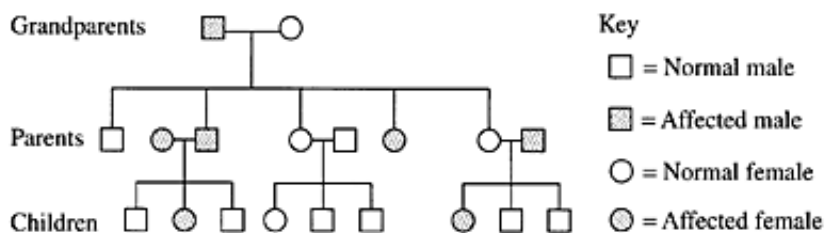


11 Polycystic kidney disease is a rare disorder affecting 1 : 1250 live-born infants. The pedigree shows the incidence of this disease in a family.

HSC 2002 - Biology  
Question 11

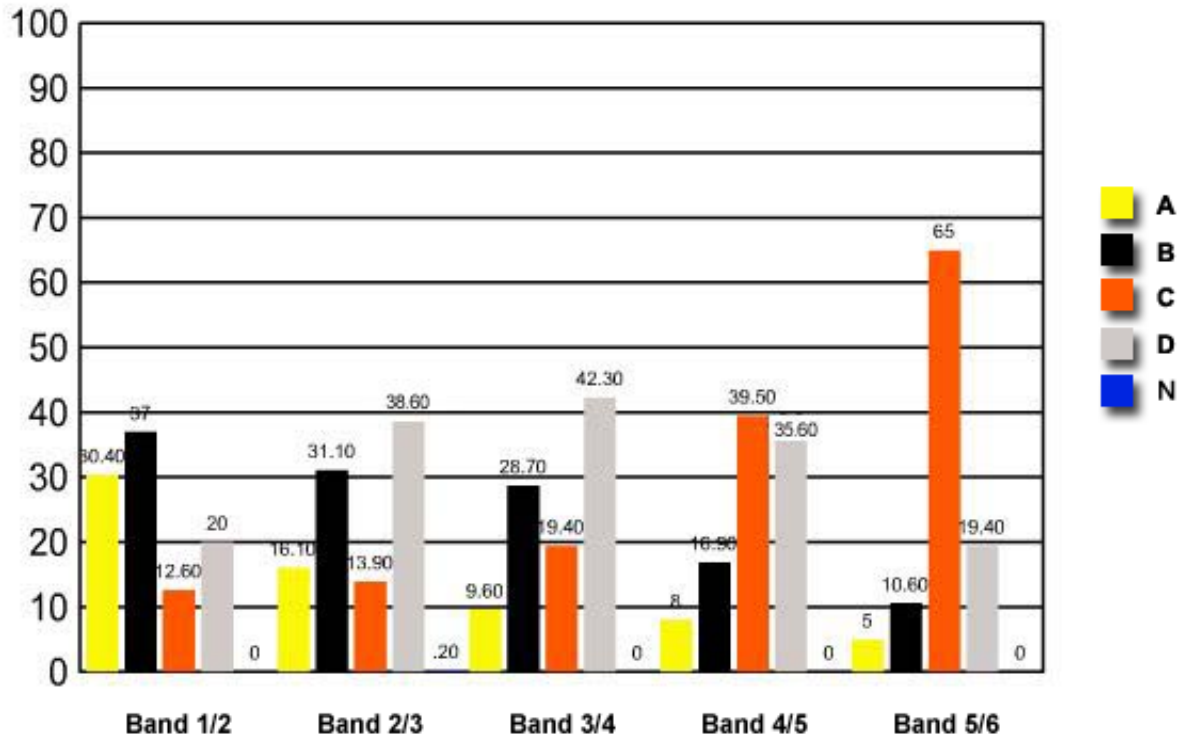


Which of the following statements best describes the mechanism of inheritance of this disorder?

- (A) Sex-linked and dominant
- (B) Sex-linked and recessive
- ✓ (C) Non sex-linked and dominant
- (D) Non sex-linked and recessive

	Band 1/2	Band 2/3	Band 3/4	Band 4/5	Band 5/6
A	30.40	16.10	9.60	8	5
B	37	31.10	28.70	16.90	10.60
C	12.60	13.90	19.40	39.50	65
D	20	38.60	42.30	35.60	19.40
N	0	0.20	0	0	0

Question 11 : % answers correct by band range



The table and graph show, for the groups of students whose marks in the examination corresponded to the borderline between two bands, what percentages of each group selected the responses A, B, C and D. N is used to identify: No valid response.